

MEMBERS SUSTAINABLE DEVELOPMENT ADVISORY GROUP

Venue: Town Hall,
Moorgate Street,
Rotherham. S60 2TH

Date: Friday, 30th October, 2009

Time: 10.30 a.m.

A G E N D A

1. Minutes of the previous meeting held on 31st July, 2009 (Pages 1 - 8)
2. Any matters arising from the previous minutes
3. Presentation - "Carbon Reduction Commitment - Energy Efficiency Scheme"
(Pages 9 - 31)
David Rhodes, Corporate Environmental Manager.
4. Environmental Management Systems report (Pages 32 - 33)
David Rhodes, Corporate Environmental Manager, to report.
5. Local Action 21 Update (Page 34)
David Wilde, Local Agenda 21 Community Worker, to report.
6. Presentation - HCA Single Conversation. (copy attached) (Pages 35 - 47)
Gordon Smith, Quality and Design Co-ordinator.
7. Policy Update. (copy attached) (Pages 48 - 53)
Emma Bridge, Policy Officer.
8. Date, time and venue for next meeting
FRIDAY, 8TH JANUARY, 2010 @ 10.30 a.m. – Bailey House (room to be confirmed)

1 MEMBERS SUSTAINABLE DEVELOPMENT ADVISORY GROUP - 31/07/09

MEMBERS SUSTAINABLE DEVELOPMENT ADVISORY GROUP
FRIDAY, 31ST JULY, 2009

Present:- Councillor Smith (in the Chair); Councillors Austen, Gosling, McNeely and Pickering.

1. MINUTES OF THE PREVIOUS MEETING HELD ON 6TH MARCH, 2009

Agreed:- That the minutes of the previous meeting held on 6th March, 2009, be accepted as a correct record.

Arising from Minute No. 102 (World Environment Day), it was noted that the Adsetts Canal Project involving adults with learning difficulties had not gone ahead. The only local events had been in Canklow, Rawmarsh and Thurcroft but disappointingly no members of the public had attended.

Events had been publicised in two editions of the Rotherham news, information sent to the local press and information on Rother FM. Publicity was one of the learning points for next year.

Arising from Minute No. 103 (Environmental Management System), it was noted that currently there was no charging system in place for schools at present. However, that would soon change with prices reflecting the size of the school, heating system etc.

2. SUSTAINABLE DEVELOPMENT - UPDATE

Emma Bridge gave a powerpoint presentation as follows:-

UK Government Five Point Plan

- Protecting the public from immediate risk
- Preparing for the future
- Limiting the severity of future climate change through a new international agreement
- Building a low carbon UK
- Supporting individuals, communities and businesses to play their part

Key Government Announcements

UK Low Carbon Transition Plan White Paper

- UK's first ever comprehensive low carbon transition plan to 2020
- Key steps include:-
 - o All major UK Government departments allocated own carbon budget
 - o 40% of electricity from low carbon sources by 2020 by 2020 with policies:-
 - Produce around 30% of our electricity from renewables by 2020
 - Fund up to four demonstrations of CCS
 - Facilitate the building of new nuclear power stations
 - o Clarifying that Ofgem should help tackle climate change and

ensure security of supply

UK Low Carbon Transition Plan

- Making homes greener by:-
 - £3.2 billion to help households become more energy efficient
 - Rolling out smart meters in every home by the end of 2020
 - Piloting “pay as you save”
 - Introducing clean energy cash-back schemes
 - Competition for 15 towns, cities and villages
- Helping the most vulnerable by:-
 - Creating mandated social price support
 - Piloting a community-based approach to delivering green homes in low income areas
 - Increasing the level of Warm Front grants
- Up to £120 million investment in offshore wind
- £60 million for marine energy
- Cutting average carbon dioxide emissions from new cars across the EU by 40% on 2007 levels
- Largest demonstration project for new electric cars
- Sourcing 10% of UK transport energy from sustainable renewable sources by 2020
- Tackling emissions from farming
- Producing a longer term roadmap by next spring
- Vision for a smart grid
- Setting out the Government’s assessment of the outlook for energy security

Renewable Energy Strategy

- 15% of UK energy from renewable sources by 2020
- Greater financial support
- Swifter delivery and removing barriers
- New resources and technologies

Low Carbon Industrial Strategy

- Builds on *Building Britain’s Future: New Industry, New Jobs*
- Global market for LCEGS - £3 trillion. £4.3 trillion by 2015
- UK - £106 billion, 880,000 people employed
- Removing barriers
- Developing economic activity

3 MEMBERS SUSTAINABLE DEVELOPMENT ADVISORY GROUP - 31/07/09

- Growing innovative businesses
- A low carbon transition

Implications for Local Authorities

- Identify the best potential for low carbon community-scale solutions in their area
- Greater adoption of renewables in the public sector
- Strategic decisions about skill need
- Some additional funding

Dearne Valley Eco-vision

- Making a transition from carbon production to carbon reduction in 3 big steps:-
 - o Nurturing ecological awareness and know how
 - o Growing a low carbon infrastructure
 - o Natural regeneration of the landscape
- What this means for the Dearne Valley
 - o More energy efficient homes – cutting fuel bills and helping the planet
 - o Improved public transport – less reliance on the car
 - o Training opportunities in skills to address climate change – improving job prospects
 - o More businesses specialising in environmental technologies attracted to the Dearne creating new job opportunities.
- Next Steps
 - o Meetings with key individuals/organisations
 - o Set up new structure of groups
 - o Dedicated Dearne Valley project team
 - o Develop Action Plan to turn ideas into reality
 - o Alignment with existing strategies, initiatives and investment programmes
 - o Feasibility of new projects
 - o Engage communities in helping to shape the action plan
 - o Communications Strategy being developed
 - o Out to consultation in Summer 2009

Monthly updates were available via the Council website at :

<http://www.rotherham.gov.uk/graphics/YourCouncil/Policy+Research+and+Community+Engagement/ SDPolicyUpdates.htm>

Discussion ensued on the presentation with particular reference to the need for political representation on the Dearne Valley Special Board.

Agreed;- That the presentation be noted.

3. LA 21 REPORT

David Wilde (LA21's), presented a progress report highlighting the following issues:-

- Ecological footprinting at Brinsworth, Central Library, Maltby and Thrybergh Stepping Stones
- World Environment Day and RCAT Fairtrade event
- Successful bid to ABC Fund by Friends of Austen Park
- Austen Park litter pick and hedge laying
- Continuation of Green check with Abbey School
- Opening of St. Ann's Dream Playgrounds
- Celebration of Dalton Listerdale Supergrounds project
- Successful Sustainable Schools INSET
- Promotion of Green Check to School Governors, progress with Aston C. of E. School and signing up of Rawmarsh Ashwood Primary, Thorpe Hesley Juniors and Rawmarsh Rosehill
- Support for High Greave and Thorpe Hesley Infants on Sustainable Schools
- Global Footprints Food Trail projects at Wath C. of E. Primary and Sitwell Juniors

Agreed:- That the report be noted.

4. **ROTHERHAM WATERWAYS STRATEGY**

Carolyn Barber reported that the Strategy had been funded by the Council and the Environment Agency. Rotherham was a water based town with lots of opportunity for regeneration and for improving people's quality of life, to enhance and promote and get people more involved in their waterways.

A number of the Town Centre Strategies all had objectives for the waterways or activities that linked to the waterways so this Strategy was a way of bringing them altogether.

The objectives of the Strategy were:-

To improve the quality of lives
 Enhance Biodiversity
 Provide key assets for regeneration and economic redevelopment
 Regenerate community ownership and stewardship of the waterways

Development of the Strategy had arrived at a number of projects, under various priority themes to take forward the above objectives:-

River Restoration

Looks at flood management plan, the natural processes of the waterways, wetlands, removal of endangered species, pollution and watercourses

Regeneration projects

Look at a number of the large scale projects already underway and how they would be able to achieve part of the objectives e.g. Manvers, YES

5 MEMBERS SUSTAINABLE DEVELOPMENT ADVISORY GROUP - 31/07/09

project, Waverley, Dearne Valley Eco Vision

Chesterfield and Other Canals

Something more to highlight rather than increase involvement as there were already Trusts and partnerships looking at how Canals could be improved

Riverside Nature Reserves

There was a very good cross section of nature reserves in Rotherham many of which were linked to waterways

Access Networks

Looking at how to identify where there was access and where there were gaps

Community and Stakeholder Engagement

Looking at not just local communities but businesses that fronted or backed onto the waterways and had the potential for incidences of pollution or people that may want to redevelop/move their business where they may be at flood risk

The Waterways Strategy had been a priority of the LSP's Sustainability Partnership of the LSP and would continue to be following the recent consultation with them.

An action plan would now be compiled which the Partnership would use to monitor progress and the current level of activity and ascertain where the gaps were in achieving the priority themes.

The Strategy had been prepared along the same lines as Sheffield and it was hoped to build upon a lot of the work they had started. They had a Waterways Partnership and, as the Catchment Flood Management Plan covered both Rotherham and Sheffield, it was hoped to make it a Sheffield and Rotherham Partnership.

Agreed:- That the report be noted.

5. DRAFT ENVIRONMENT AND CLIMATE CHANGE STRATEGY

Emma Bridge circulated the above draft document which had been considered by the Cabinet on 29th July, 2009, and was now out to consultation.

The Council and Rotherham Partnership had jointly developed the draft Strategy and action plan. As the largest employer in the Borough, the author of key strategies and a major service deliverer, the Council would take responsibility for delivering large elements of the Plan.

The purposes of the Strategy were: to-

- Set out how the Council and its partners would reduce Rotherham's contribution to climate change
- Set out how the Council and its partners would be prepared for climate change, improving Rotherham's resilience to current and future climate change
- Act as an overarching document, signposting to the various strategies required or already in place that relate to climate change
- Provide a proactive framework for action across the Local Strategic Partnership

Draft Aims and Objectives:-

- Reduce Rotherham's contribution to climate change through the reduction of CO₂ equivalent emissions (mitigation)
- Prepare Rotherham for a changing climate (adaptation)
- Reduce Rotherham's Ecological Footprint
- Promote sustainable development across the Borough
- Enhance Rotherham's local environment

Discussions were taking place at the moment as to what level it should be signed off at and it had been agreed that it should be Borough-wide action plan and not just focus on Council activity.

The document would be sent by e-mail for consultation followed by presentations and meetings. Discussions had already commenced with some of the Boards to ensure there were actions for each of the LSP Boards.

Agreed:- (1) That the report be noted.

(2) That any comments be forwarded to Emma Bridge or David Rhodes.

6. ENVIRONMENTAL MANAGEMENT SYSTEMS

David Rhodes, Corporate Environmental Officer, circulated copies of the draft environmental Statement and presented an update report as follows:-

- An external EMAS was currently taking place by ISOQAR
- Of the 124 buildings surveyed for Display Energy Certificates, 78 had been lodged with energy ratings
- Using the DEFRA spreadsheet CO₂, NOX and PM10 emissions were reported in compliance with NI185 and NI194. Arrangements were in place to improve data collection.

Discussion ensued with the following highlighted:-

- There was a massive problem with Japanese Knotwood. It was

7 MEMBERS SUSTAINABLE DEVELOPMENT ADVISORY GROUP - 31/07/09

classed as controlled waste

- Trials had taken place in the past on the use of solar lights in street lights with consideration being given to the implementation in outlying areas

Agreed:- (1) That the report be noted.

(2) That a report be submitted to the next meeting on the use of solar lighting in street lights.

7. NEIGHBOURHOOD INVESTMENT'S CONTRIBUTION TO SUSTAINABLE DEVELOPMENT

Gordon Smith, Quality and Design Co-ordinator, and Chris Brown, Place Shaping Co-ordinator, gave the following powerpoint presentation:-

Sustainable Communities – Place Making

- Contribution to the Comprehensive Area Assessment and Local Area Agreement
- Homes and Communities Agency (HCA) underpinned by the place making and sustainable community principles
- Current and future external capital funding linked to the sustainable community principles
- Government strategies, policies and target – World Class Places, code for sustainable homes, affordable housing and employment linkages

Linking together the Sustainable Communities and Sustainable Development Agendas

- Look at the unique characteristics of places in Rotherham
- Listening to the needs of people in different places
- Making neighbourhoods stronger and more popular for those who live in them
- Raising the quality of life in particular for vulnerable or the disadvantages

Improving Current Homes – Baseline Assessment

- SAP 60 average per property
- CO₂ 5t per property
- £800 to £1,000 running costs per property
- CERT Funding 2008/09
 - £247,000
 - Loft top ups to 250 mm x 2084
 - Cavity wall installations x 50
 - Low energy light bulbs x 4000
 - Power downs x 125
 - Carbon monoxide x 500 sold at cost
- Warm Front 2008/09
 - £671 k
 - Full central heating 196

- Boiler replacement 1

Ground Thermal

- Ground sources heat pumps
- Retrofit projects

What's next for existing homes?

- Carbon Emissions Reduction Target
- NEA/C&G 6176
- Real Time Displays and Home Energy Advice
- Awareness raising, ongoing coaching and monitoring

Raising the design quality of new homes

- 105 inspirational eco excellent homes 2008/09
- Expertise and emerging expertise in delivering Code for Sustainable Homes level 3, 4 and 5
- Design excellence Affordable and Market housing
- Building for life standards
- Contribution to South Yorkshire Design Code/Sub-Regional guidance
- Raising aspirations

Discussion ensued with the following issues highlighted:-

- The cost of sustainable development
- Life Time Homes was an element in the consideration of whether a development reached the Building for Life Standard

Agreed:- That the presentation be noted.

8. DATE AND TIME OF NEXT MEETING

Agreed:- That a further meeting be held on Friday, 30th October, 2009, commencing at 10.30 a.m.

Carbon Reduction Commitment (Energy Efficiency Scheme)

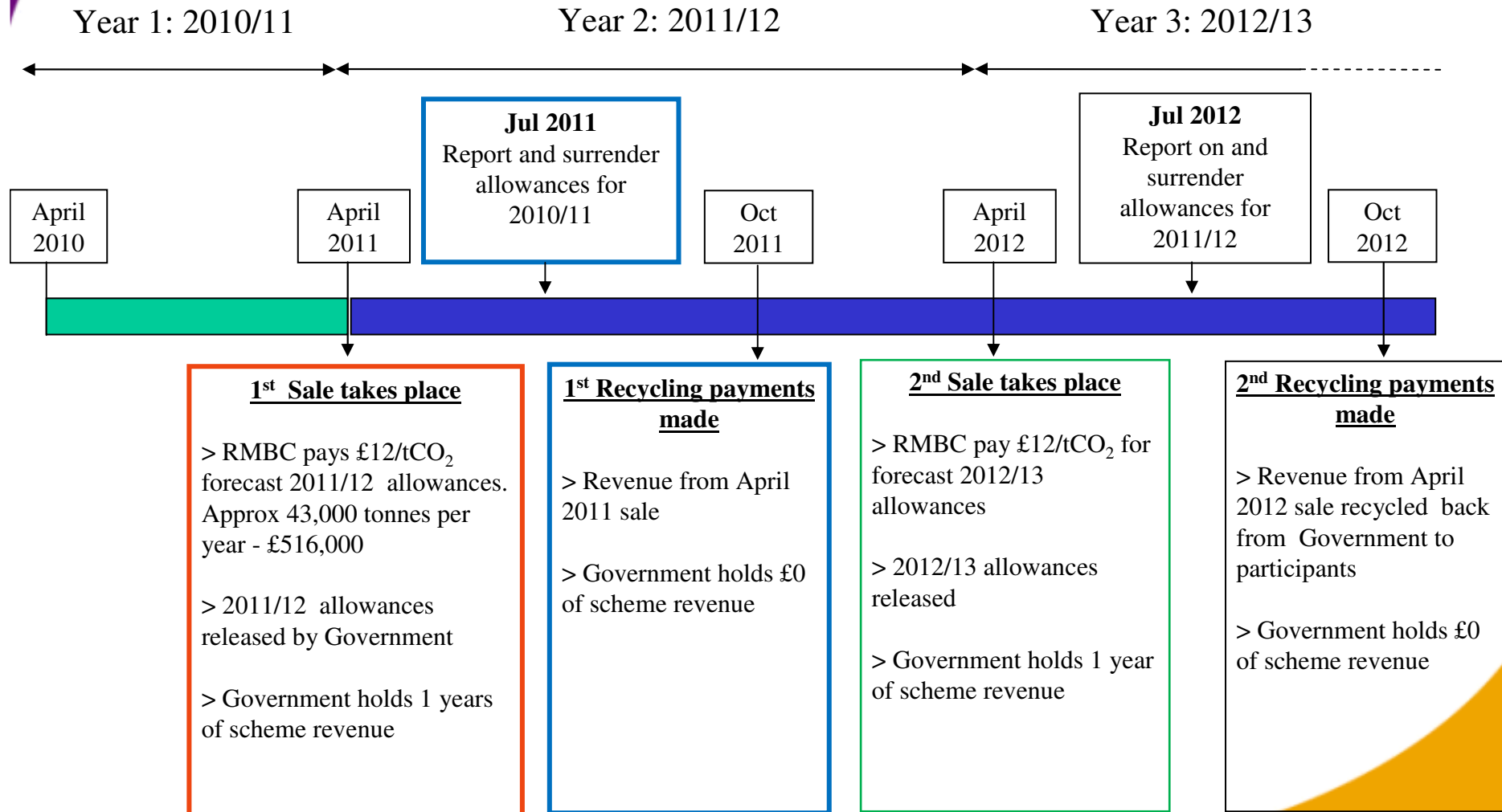
Members Sustainable Development Advisory Group
30 October 2009

Carbon Reduction Commitment

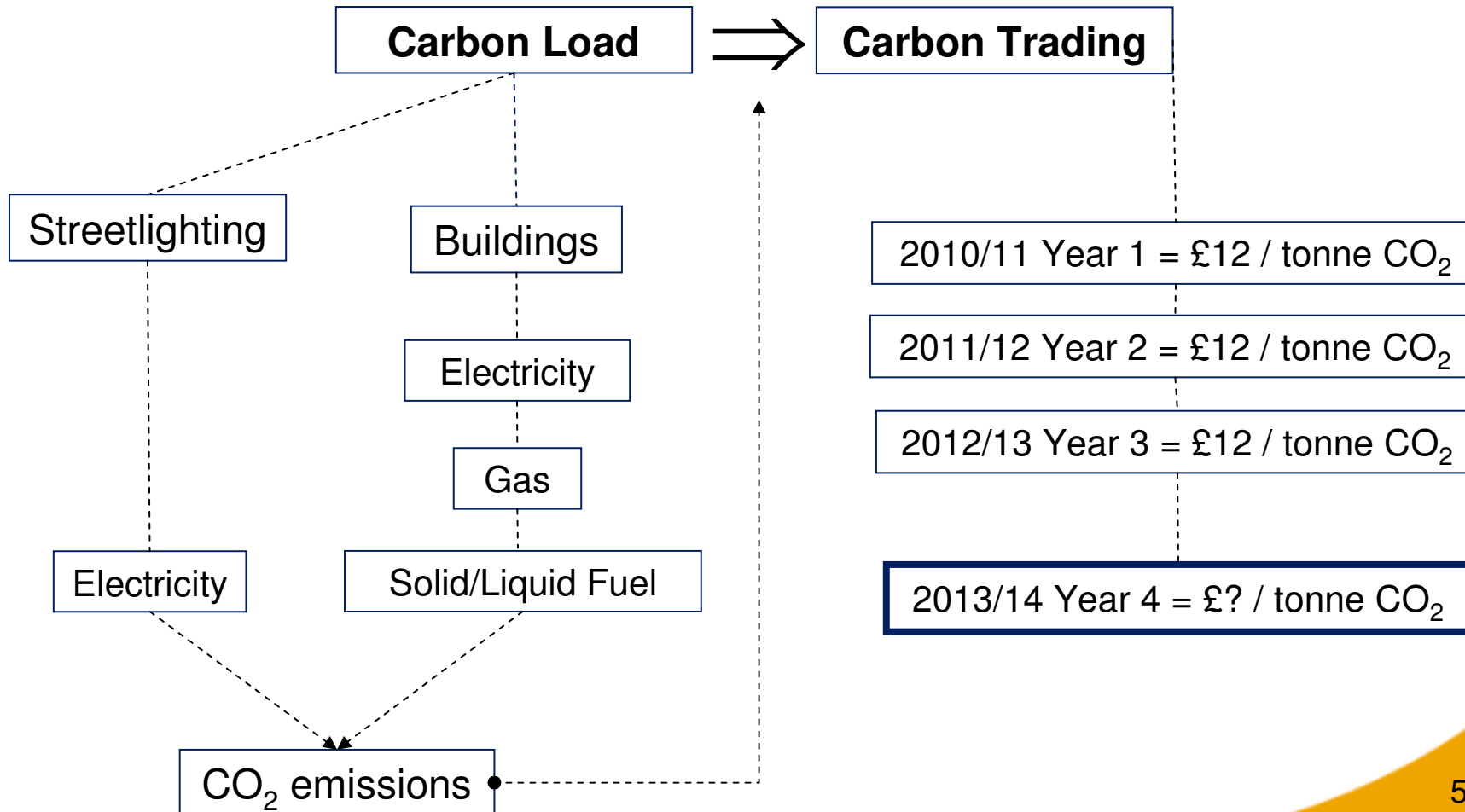
- Mandatory carbon trading scheme covering approx 5000 public and private sector organisations
- For every tonne of CO₂ emitted by RMBC we have to purchase 1 allowance
- Allowances are purchased in April to cover the CO₂ emitted for energy used in Council buildings/sites and street lighting:
 - Includes schools
 - Does not include transport
 - No credits for green electricity
- Energy consumption monitored / projected and reported annually in July (includes electricity, gas and other fuel types)
- Allowances surrendered in July to cover annual emissions.

Carbon Reduction Commitment

- £12 per allowance for the first 3 years (Introductory phase)
- Receive reimbursement payment based on league table position
- Unknown price for the following phases - purchased through a sealed bid auction
- Amount of allowances available to the market will be capped from April 2013
- Where to buy allowances?
 - Sealed bid
 - Secondary market
 - Safety Valve
- Banking allowed for introductory phase but not allowed to carry allowances over to next phase
- Unlimited banking for future years

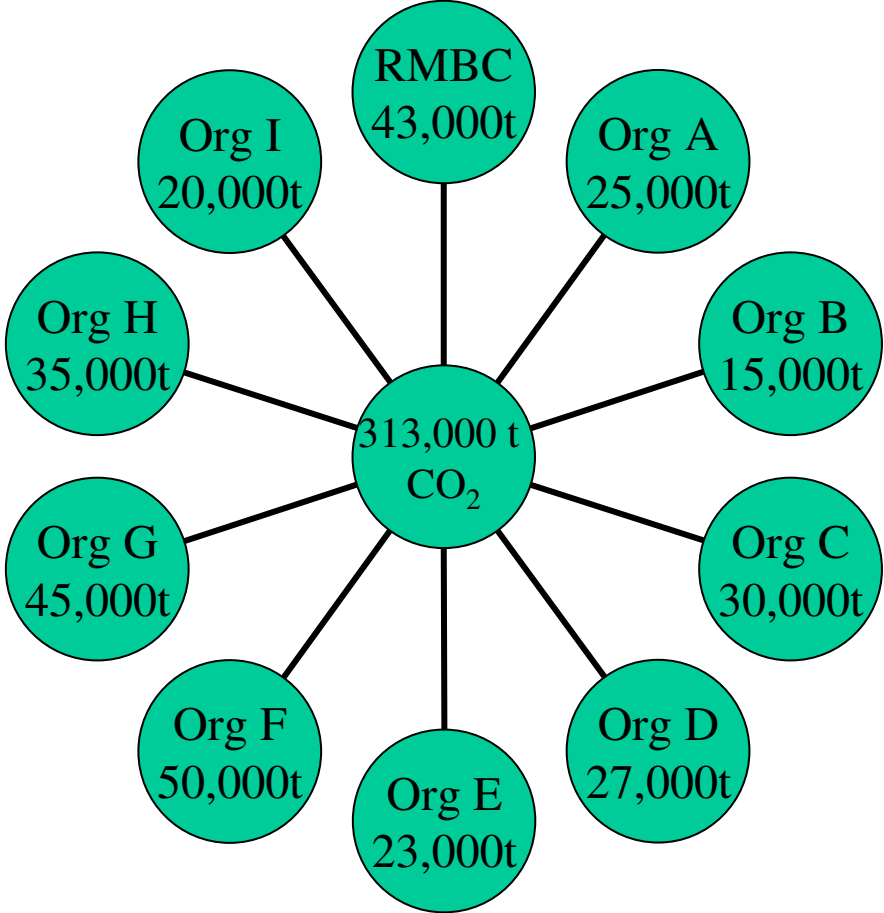


Carbon Trading Equation



Organisation:	Rotherham MBC	Fuel type	Amount used	Units	Conversion factor*	Total kg CO ₂	Comments	
Name of respondent:	David Rhodes	Electricity (grid)	59900454.00 0	Kwh	0.537	32167741.81		
		Electricity - CHP		Kwh	0.304	0		
		Electricity (onsite renewables)	1488.000	Kwh	0.000	0	<i>PV Cells at Brinsworth comp</i>	
Period	Apr 2013 - Mar 2014	Natural gas	57469836.00 0	Kwh	0.185	10630195.56		
Length of data collection	12 Months	Gas oil	449986.000	Kwh	0.252	113396.472		
Estimated carbon savings	2%	Coal	270351.000	Kwh	0.329	88945.479	<i>DEFRA CO₂ rate</i>	
		Total kg CO₂					43000279.32	
Comments:		Total tonne CO₂					43000.28	
Based on CRC Portfolio 090609		Proportion per month (t/CO₂)					3583.36	
							6	

Carbon Trading



CRC estimated emissions from participating organisations = 313,000t CO₂

Carbon Trading

Sealed Bid Auction

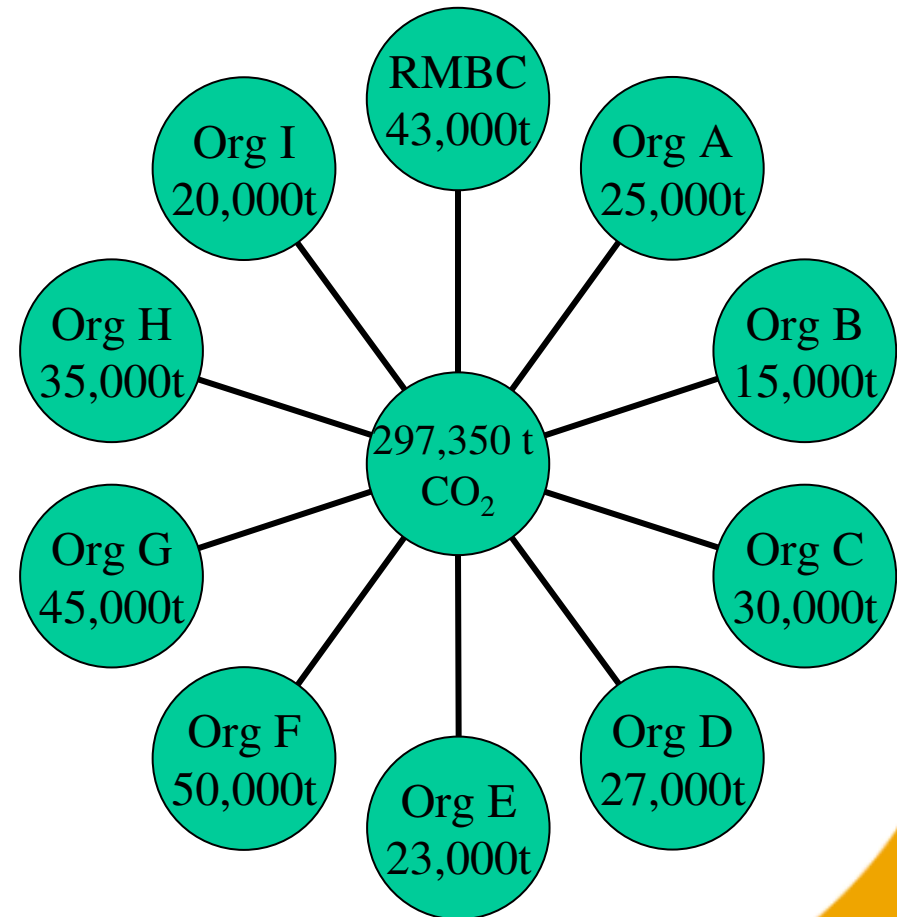
RMBC projected emissions = 43,000 tonnes of CO₂ submits a sealed bid:

STEP 1 - BIDDER INFORMATION	Bidder Organisation Name	RMBC
	Bidder Representative	Paul Lution
	Representative Phone	01709 821122
	Representative Email	p.lution@rotherham.gov.uk
STEP 2 - ENTER BID INFORMATION (Bidders must enter five bids)	Allowance Price	Quantity Bid
	£10	43,000 (= £430,000)
	£12	43,000 (= £516,000)
	£14	41,000 (= £574,000)
	£16	40,000 (= £640,000)
	£18	37,000 (= £666,000)
STEP 3 – SIGNATURE	I am authorised to sign and make this submission on behalf of the Bidder Organisation named above. Authorized Signature: P. Lution Date: 30 October 2009	

Carbon Trading

Capped from April 2013

1. CRC estimated emissions from participating organisations = 313,000 t CO₂
2. Government apply a 5% cap = 15,650 t CO₂
3. Allowances available for auction = 297,350 (313,000 – 15,650)



Carbon Trading

Sealed Bid Auction

Available allowances = 297,350. Received bids from participating organisations:

Available allowances = 297,350											
Allowance Price	Quantity Bid (000,s)										
	RMBC	A	B	C	D	E	F	G	H	I	Total
£10	43	25	15	30	27	23	50	45	35	20	313,000
£12	43	23	15	30	27	23	48	45	34	20	308,000
£14	41	23	14	29	25	23	48	45	32	18	298,000
£16	40	20	14	27	24	23	45	43	30	18	284,000
£18	37	18	12	27	22	22	45	42	30	17	272,000

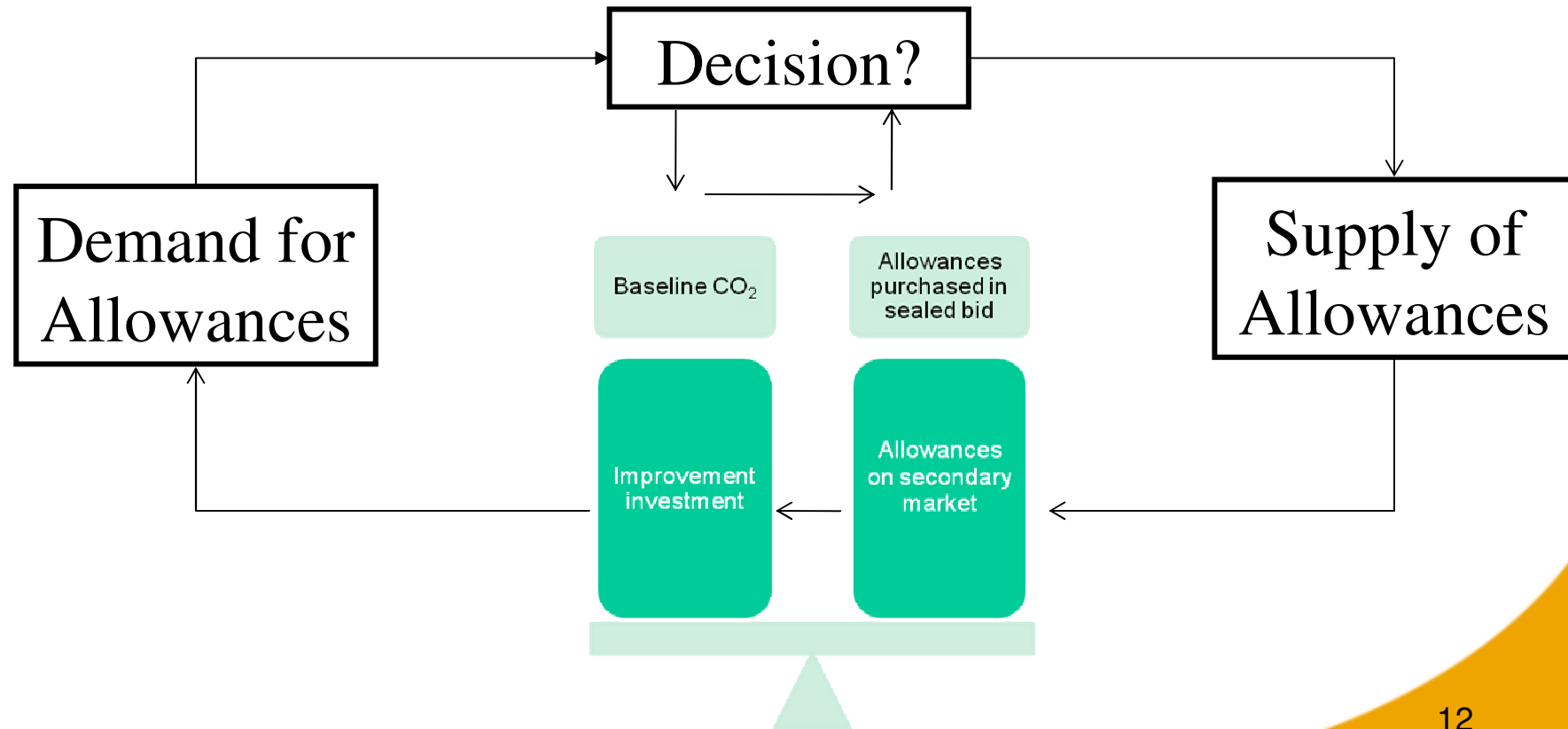
Carbon Trading

Sealed Bid Auction Result

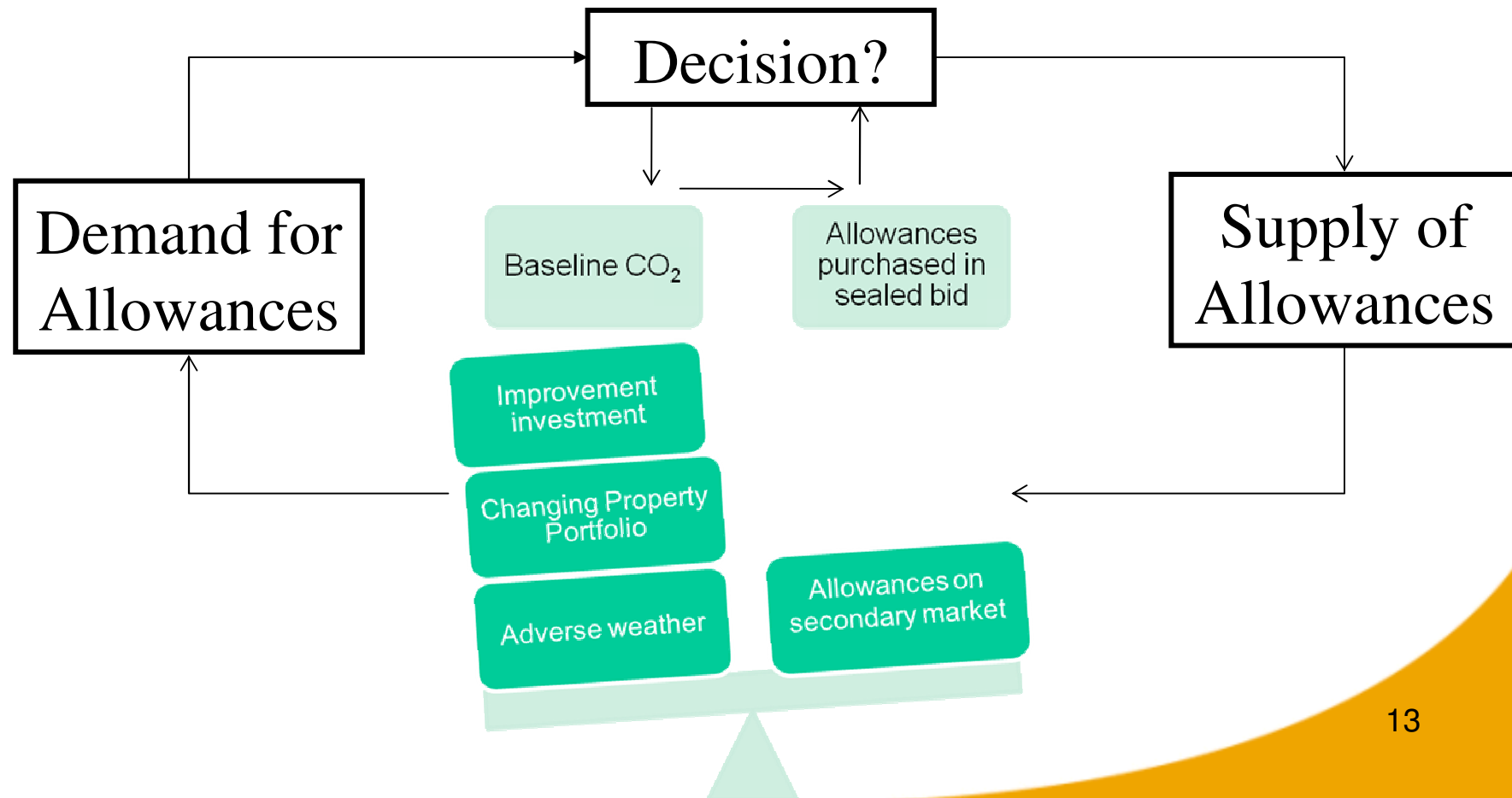
RMBC projected emissions = 43,000 and submitted a sealed bid resulting in allowances being allocated at £16 per tonne = 40,000 allowances.

A deficit of 3,000 tonnes of CO₂ emitted without allowance cover.

Carbon Trading Supply and Demand



Carbon Trading Supply and Demand



Carbon Trading Gamesmanship

1. Reduce emissions > Investment
2. Reduced allowances > lower cost
3. Reduced risk > less potential cost
4. Form a secondary market coalition e.g. YPO
5. Create a grey market

Performance League Table

Repayments are made in October and the amount depends on:

- RMBC's position in the league table
- A bonus or penalty applied

Introductory Phase			
Year 1 April 2010 To March 2011	Parameters	Explanation	weight
	Early Action 1	Installation of voluntary automatic metering by 31 March 2011	50%
	Early Action 2	Accreditation to the Carbon Trust Energy Efficiency Standard	50%

Year 2 April 2011 To March 2012	Early Action 1	Installation of voluntary automatic metering by 31 March 2011	20%
	Early Action 2	Accreditation to the Carbon Trust Energy Efficiency Standard	20%
	Absolute savings	% reduction in CO ₂ emissions using a 5 year rolling average (years available average for the first 5 years)	40%
	Growth	Growth in size or revenue whilst demonstrating carbon reductions in real terms on a 5 year average	20%

Performance League Table

Repayments are made in October and the amount depends on:

- RMBC's position in the league table
- A bonus or penalty applied

Year 3 April 2012 To March 2013	Early Action 1	Installation of voluntary automatic metering by 31 March 2011	10%
	Early Action 2	Accreditation to the Carbon Trust Energy Efficiency Standard	10%
	Absolute savings	% reduction in CO ₂ emissions using a 5 year rolling average (years available average for the first 5 years)	60%
	Growth	Growth in size or revenue whilst demonstrating carbon reductions in real terms on a 5 year average	20%

Future Phases			
	Parameters	Explanation	weight
All compliance years 2013 onwards	Absolute savings	% reduction in CO ₂ emissions using a 5 year rolling average	75%
	Growth	Growth in size / revenue whilst demonstrating carbon reductions in real terms on a 5 year average	25%

Reimbursement Payment

Calculated from two elements:

1. A set payment based on the proportion of the total CRC emissions in the first year of the scheme (2010/11).

e.g. RMBC has emissions of 100 tonnes of CO₂ in 2010/11 and the total emissions from all participants in 2010/11 is 10,000 tonnes of CO₂ then RMBC's share is 1%. The basis for each future recycling payment to RMBC will therefore be 1% of the total revenue raised each year.

2. This is then adjusted by a bonus or penalty payment based on our position in the performance league table. Essentially, the higher your position in the table, the better your bonus payment.

Reimbursement Payment

Note.

when RMBC improves more than average, we spend less each year on energy and allowances – but receive a higher fraction of the recycling pot.

This therefore means there is a double financial benefit for good performance.

Reimbursement Payment

The top placed organisation will have the highest bonus rate and the bottom organisation the maximum penalty rate.

Phase	Year	Bonus/Penalty Rate
Introductory phase	2010 - 2011	+/-10%
Introductory phase	2011 - 2012	+/-20%
First capped phase	2012 - 2013	+/-30%
First capped phase	2013 - 2014	+/-40%
First capped phase	2014 - 2015	+/-50%

Risks

- Significant admin/cost/resource burden
- Large 'up-front' payment that could be reduced in reimbursement
- Reputational risk
- Change and late delivery of regulations / guidance / admin support (EA) – as with DEC's
- Changes to regulations
- Penalties significant
- General election by June 2010
- Projections of emissions

What now?

- Confirm portfolio and improve monitoring
- CRC admin and support
- Develop a trading strategy and prepare bids
- Develop schools strategy (DCSF Schools Financial regulations consultation)
- Installation of AMR
- **Carbon Trust Standard**
- Review carbon reduction plans (*photovoltaic Panels*)

Questions?



Sustainable Development Advisory Group

Rotherham
Metropolitan
Borough Council



Environmental Management System

1. Overview of the issue

Environmental Management within RMBC prioritise CO₂ reductions in compliance with the 2% reduction target for NI 185 'reduction of CO₂ from Council activities and the Carbon Reduction Commitment – Energy Efficiency Scheme.

2. Summary of key events in the period – up to 30 October 2009:

EMAS

The external audit was successful and certification is now being processed by Institute of Environmental Management and assessment.

Display Energy Certificates

Display Energy Certificates (DEC) and advisory reports are required for Council buildings above 1000m². The current position will be reported verbally. An annual renewal programme is being produced.

The requirement for DEC's will be reduced in December 2010 and all buildings 250m² and above will require certification.

NI 185 & 194

Arrangements are in progress to improve data collection ready for reporting in July 2010.

Carbon Reduction Commitment – Energy Efficiency Scheme

RMBC are preparing for our involvement in the mandatory carbon trading scheme that will start in April 2010 (presentation at the meeting).

3. Key issues for Rotherham / how this fits in with Corporate priorities

Legal compliance with EPBD and achieving the 2% reduction target for NI 185.

4. Next Steps or action required.

- Continued DEC / advisory report production for all applicable buildings.
- NI 185/194 reporting on an annual basis and CO₂ reductions.
- Preparations for the Carbon Reduction Commitment.

Contact details: David Rhodes tel. 2166 e-mail: david.rhodes@rotherham.gov.uk

Date of report production: 16 October 2009

Outstanding Questions from previous meeting

Question 1: *Are there any solar streetlights in Rotherham?*

No, solar powered streetlights have been considered in the past but deemed not feasible due to the capital cost. They are however continuously being reviewed against the changing energy market; carbon emissions; isolated locations and the Carbon Reduction Commitment. Rotherham does have 6 solar powered street signs where there are no YEDL services and the payback period was acceptable.

Streetlighting team do continuously strive for CO₂ reductions and improved energy efficiency including:

- Revised specification of photo electric cells (on 55 lux and off at 28 lux) and trial lower levels for on / off switching
- Use electronic control gear for higher wattage lamps to reduce circuit power required
- Explore the options available for reduced lighting / dimming in appropriate areas
- Trial and monitor Light Emitting Diode (LED) lighting
- Consider the use of remote monitoring and switching systems for future installations
- Look at all opportunities offered by new technology to minimise energy use e.g. renewable energy systems; LED systems

Question 2: *Why do utility companies leave road markings in situ and could they not use graffiti wipes to clean the paint off?*

Utility companies and ourselves need to identify underground apparatus before excavation. These are marked on the surface for risk management purposes. We all use temporary water based paint that wears off after a short time. For this reason enforcement action is not normally necessary.

If the markings were seen to be excessive or we received complaints then we would discuss remedial action with those responsible which might be to remove them or to overspray with black paint. Certain paint markings can be permanent and we have enforced surface replacement on rare occasions to remove them.

Members Sustainable Development Advisory Group



Local Action 21 Progress Report

1. Overview of the issue(s) you are reporting on:

Specific Education for Sustainable Development (ESD) projects continue, particularly in relation to the Department for Children, Schools and Families (DCSF) Sustainable Schools Framework, together with more informal awareness raising sessions. Ongoing support for projects contributing to sustainable development in Rotherham, particularly in relation to climate change and biodiversity.

2. Summary of Highlights July to October 2009:

- Continued Green Check work with schools (e.g. Wath CofE, Abbey) and enrolment of Rawmarsh Rosehill, Aston Lodge Lane and Swallownest Primarys enabled by additional funding being acquired
- Approval of Green Check by Dearne Valley Eco-Vision Core Group
- Recognition nationally of work being done in Rotherham on Sustainable Schools by national government Department of Children Schools and Families (DCSF)
- Ecological footprinting sessions at schools and with community groups
- Rotherham Environment Forum walk around Henley Rise
- Completion of Supergrounds project at Dalton Listerdale
- Completion of Global Footprints Food Trail at Herringthorpe Juniors and Wath CofE and commencement at Coleridge
- Rotherham ESD Partnership met on 6 October to discuss schools, Building Schools for the Future and Extended Services, response to Carbon Management Strategy for Schools consultation and possibility of ESD website
- Sustainable Schools INSET on 23 October

3. Key issues for Rotherham/how this fits in with Corporate priorities

Continued focus specifically on climate change and biodiversity, in line with Sustainability Partnership priorities

Continued implementation of sustainable development as a cross-cutting theme in the (Sustainable) Community Strategy, e.g. through attendance at the Rotherham Environment/Sustainable Development Partnership, Officers Group and as co-ordinator of the ESD Partnership and Rotherham Environment Forum (REF)

4. Next Steps or action required

- Progress implementation of audits/action plans at EMAS/Green Check schools and enlist further new schools
- Continued ESD activity as part of the DCSF Sustainable Schools initiative, including ongoing representation at Yorkshire and Humber Sustainable Schools Co-ordination Group (7 Dec)
- Progress closer working with Children and Young People's Services, e.g. by Green Check/Sustainable Schools presentation to Headteachers
- Progress potential for Social Cohesion work in the context of LA21 (and Sustainable Schools)
- Green Check presentation to Sustainability Partnership on 11 Nov
- REF meeting on 8 Dec to include Eco-Vision presentation

An Introduction to The Single Conversation

Homes & Communities Agency - A New Era

- HCA is a new agency bringing together many regeneration funding pots
 - HMR, RHB, English Partnerships, NAHP, Decent Homes, Growth, CIF
- Closer working and alignment between HCA and the RDA (Regional Development Agency) Yorkshire Forward
- HCA will be the key player in delivering housing and regeneration projects throughout the country
- A key methodology for deciding the allocation of this funding is to be the single conversation with local authorities

How the Single Conversation Will Take Place

- The single conversation is a place-based approach that will take the vision and ambitions of local authorities and help them achieve their plans through a shared investment agreement. Through this process, the HCA as the national housing and regeneration agency, will act as the bridge between local ambition and national targets.
- Single conversation is the approach adopted to agree funding allocations for a 3 year period
 - Series of workshops and working group meetings
 - Rotherham priorities
 - HCA themes and priorities
 - Funding/Budget constraints
 - Uncertain political environment
- Consultation and communication policy being developed to ensure Members, ADF steering groups, internal and external partners are informed and engaged

Single Conversation - Timetable

- Single Conversation Pilots started this month
- Rotherham is planning to start the process in January 2010
- Important to maintain momentum by continuity of External Funding beyond 2011

2011/14 Local Investment Agreement

- The process will articulate the shared priorities of the local partners including:
 - Spatial priorities for growth and renewal
 - Town centre renaissance
 - Key housing and regeneration sites
 - Physical and social infrastructure requirements
 - Local Investment Plans
 - Delivery roles and responsibilities
 - Capacity to deliver and risks associated with plans

Uncertainties of future funding

- The HCA and the Single conversation are not yet established.
- The impact of the economic downturn may restrict public funding for regeneration
- RMBC does not know how much it will be allocated
- TSY are adapting their role to meet the current changing environment
- The point at which housing market recovery and private sector led growth will support our objectives

Homes & Communities Agency Regional Priorities



- Affordable Housing (NAHP)
 - Housing Delivery
 - Housing Quality
 - Vulnerable and older people
 - Gypsy and traveller
- Housing Growth
- Housing Market Renewal
- Vulnerable people

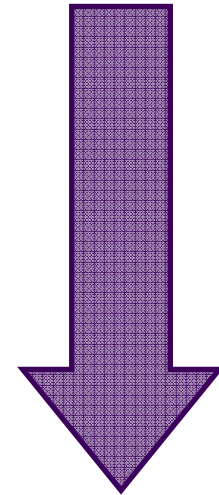
Our Track Record 2008/11

Year	HMR /RHB /Growth	NAHP	Total
2008 / 2011	£35.7m	£14m	£49.7m

- £7.5m commitments going forwards

Developing Rotherham's 2011-2014 programme

- Weekly officer working group
- Monthly strategic group Chaired by Dave Richmond
- Workshop event
- Consultation Programme to ensure stakeholder buy in
- Sub – Regional Housing Investment Strategy in place by November 2009
- Workshops with the HCA anticipated January 2010



What Are Our Spatial Priorities?

- Rotherham Town Centre
- The Rotherham Central Corridor
- The Dearne Valley
- Dinnington and Maltby
- Rawmarsh and Parkgate

What Should Be Our Priorities?

- Affordable Housing
- Decent Homes Plus
- New Housing Delivery
- Vulnerable Housing
- Neighbourhood Centres & Environmental Improvements
- Affordable Warmth & Eco Housing
- Private Sector Housing

Next Steps

- Sub Regional Housing Investment Plan in place by November 2009
- Feedback from Sheffield experience by HCA in November
- Review of Existing Housing Strategy and make Fit for Purpose
- Analysis of evidence of need
- Agree priorities for investment
- Review of surplus public sector assets and use
- Develop local investment plans
- Commence Single Conversation Early 2010

Questions & Comments

Members Sustainable Development Advisory Group**Friday 30 October****Item 7: Policy Update****National****Climate change directory of national and regional support**

This directory, compiled by the IDeA, outlines a wide range of support available on mitigation and adaptation at national and regional levels. It includes links to policy, guidance, tools, training, networks, research, data and funding.

<http://www.idea.gov.uk/idk/core/page.do?pagelId=14422425>

Helping community groups to improve public spaces

This briefing by CABE is primarily for local authorities but will be of interest to other public space managers such as housing associations. It recommends ways to support community groups that are working to improve neighbourhood spaces and points to other organisations that can offer additional advice.

<http://www.cabe.org.uk/publications/helping-community-groups-improve-public-spaces>

Climate Change webchat

This is a transcript of the climate change webchat with International Development Secretary Douglas Alexander on 26 October 2009. Questions posed include the threats of climate change to poor countries and what the UK wants from this month's EU Council and the Copenhagen conference.

<http://www.number10.gov.uk/Page21094>

Green Bus Fund

The Green Bus Fund is a new £30 million fund from which bus companies and local authorities in England can compete for funds to help them buy new low carbon buses. Its main purpose is to support and hasten the introduction of hundreds of low carbon buses across England.

<http://www.dft.gov.uk/pgr/regional/buses/greenbusfund/>

School children could lead the way on sustainability

Britain's children and young people are potential agents of change for the development of more sustainable communities in the UK, according to new research funded by the Economic and Social Research Council. Many children are not only passionate about environmental issues, but more than capable of driving forward sustainability initiatives, argues new research into the role of schools in developing more sustainable communities. Children already play a key role in becoming more sustainable by encouraging changes in behaviour of those around them whether in terms of recycling, saving energy, growing vegetables and healthy eating etc.

But, argues researcher Dr Barry Percy-Smith, these changes alone are not enough; we need to encourage learning and change across whole communities. Children are well placed and also keen to take on wider roles and responsibilities as active (rather than passive) citizens in improving their communities - for example, as activists in community based projects and campaigns, as community researchers, and as ambassadors of change in other schools and in community groups.

See "Exploring the role of schools in developing sustainable communities" for more detail:

<http://www.esrcsocietytoday.ac.uk/ESRCInfoCentre/ViewAwardPage.aspx?awardnumber=RES-182-25-0038>

Government target in doubt as fuel poverty rises

Up to 4.6m households in England could be in fuel poverty this year, new figures from the Department of Energy and Climate Change reveal. Rising fuel prices helped to push up the number of households in fuel poverty to 4m in 2007, with projections for 2009 of up to 4.6m. UK-wide statistics show fuel poverty amongst vulnerable households - one that contains the elderly, children or somebody who is disabled or long term sick – rose to 3.25m in 2007.

The Annual Report on Fuel Poverty Statistics 2009 can be viewed at:

http://www.decc.gov.uk/en/content/cms/statistics/fuelpov_stats/fuelpov_stats.aspx

Lofty Ambitions: The role of councils in reducing domestic CO2 emissions

This report examines and reports on the progress made by councils to cut domestic CO2 emissions. It gives practical examples to show councils how they can tackle emissions and at the same time help to reduce fuel poverty. It also considers how councils can achieve improvements in value for money from their actions to reduce CO2.

The best councils have been good at greening homes, and have championed low carbon and renewable energy generation. They lead, oblige and subsidise social landlords and private sector homeowners to reduce domestic CO₂ emissions, coordinate funding streams, and use their local knowledge to target help where it is most needed. Actions based on good quality house-by-house and street-by-street data deliver the best value for money.

But some councils say that the multiplicity of funding streams has created 'confusion for householders and duplication of effort' when energy suppliers and others approach the same households with competing offers.

Lofty Ambitions also brands the government's £2.7 billion a year winter fuel payments as a missed opportunity to both help keep people warm and to reduce CO₂. The current system pays out to all older people despite three quarters of recipients not being classified as fuel poor, and provides no incentives to reduce CO₂ emissions. The report says the payments fail to focus on those in the greatest need and do not provide a long-term solution - spending on heating today rather than reducing the need to heat in the future.

http://www.audit-commission.gov.uk/localgov/nationalstudies/loftyambitions/Pages/Default_copy.aspx

Waste Services Benchmark

This new service is designed to help councils identify areas for improvement by comparing against a Waste Services Benchmark which reflects the range of practice across the country. A free on-line account has been created for every council and waste partnership in England. For further information visit:

www.WIN.org.uk/benchmark

Contact win@southeastiep.gov.uk to obtain login details or telephone Sara Jones on 07872 813322 for more information.

Flood Risk Management: Funding and sector support

This LGA alert gives details of how authorities can apply to a £5 million fund to reduce flood risk, 2 new resources for authorities (a Community of Practice for Flood Risk and Water Management at <http://www.communities.idea.gov.uk/comm/a-z-index.do?letter=F> and a dedicated Flood Risk Management page at <http://www.idea.gov.uk/idk/core/page.do?pagelId=12656790>), details of a Pitt Progress Letter, and an update on the Flood and Water Management Bill.

<http://www.lga.gov.uk/lga/core/page.do?pagelId=4780918>

Guide to Green Space Apprenticeships

This is a good practice guide from CABE to help local authorities, landscape contractors and others involved in delivering green space services to plan and manage successful horticulture apprenticeship programmes.

<http://www.cabe.org.uk/resources/apprenticeships>

Economic success dependent on investment in natural environment

Natural England has published a major report showing that investment in the natural environment is critical to long term economic prosperity and that natural services provide a highly cost effective solution to growing problems like flood and coastal defence, carbon emissions and the preservation of soil, water and air quality.

“No Charge? Valuing the Natural Environment”, pulls together leading research to show that the economic value of nature now runs to billions of pounds in the UK alone and that there are major savings to be made through looking after it.

The No Charge? report reveals how a century of economic innovation and growth has delivered unprecedented prosperity, but has damaged many of the natural systems on which that prosperity ultimately depends. And with climate change projections now suggesting that peak summer temperatures in the UK may rise by as much as 5.4°C within 50 years, a purely technological approach is unlikely to deliver affordable solutions to the multiple challenges we face in the 21st century.

http://www.naturalengland.org.uk/Images/nochargev2_tcm6-14259.pdf

Procurement in energy: a member's guide

This is the second in a series of guides for members on procurement. Councils spend £1.4 billion each year on electricity and gas, accounting for three per cent of the UK energy market. By smarter collaborative procurement and better risk management, councils could save up to £140 million each year.

<http://www.idea.gov.uk/idk/core/page.do?pagelId=13868116>

Fly-tipping drops by 9.3%

Fly-tipping across England has dropped by 9.3% in the last year, new statistics published by Defra show:

- In 2008-09 there were 1.16 million fly-tipping incidents dealt with by local authorities. A 9.3% decrease from the 1.28 million reported in 2007-08
- 50% of all fly-tips occurred on highways
- The estimated cost of clearance of illegally dumped waste reported by local authorities in this period was £54.9million
- Local authorities increased their enforcement actions in 2008-09 by 3.9% to over 520,000, this includes 2,000 prosecutions.

In Yorkshire & the Humber:

- 107,000 incidents were dealt with by local authorities in the region
- A 2% increase in reported incidents from 2007-08
- 73% of incidents involved household waste.

In Rotherham total incidents fell from 3112 in 2007/8 to 3020 in 2008/9.

The full fly-tipping statistics, with local authority and regional breakdowns, can be found at: <http://www.defra.gov.uk/environment/quality/local/flytipping/flycapture-data.htm>

Flood Risk Asset Register Tool – Project and Questionnaire

To help Local Authorities to better manage and use flood and drainage asset information, the Environment Agency, on behalf of Defra, is leading a project to develop an asset register tool. The project has the support of CLG and the LGA. Members of District Councils, County Councils and Unitary Authorities are all represented on the project board. Local Authorities can contribute to the project scoping phase via an online questionnaire. This will enable authorities to share information on what asset systems they already have or are in development, as well as the aspirations and expectations from authorities currently without such a system.

Views and information are requested by 9 October 2009. More information about the project will follow on the LGA's Water pages and monthly Floods Bulletin.

Online questionnaire: <http://www.halcrow.com/laat/>

LGA's monthly flood bulletin: <http://www.lga.gov.uk/lga/core/page.do?pageld=18298>

Signposting Sustainability through CAA

Sustainability is one of four underpinning themes in the comprehensive area assessment (CAA). This new online resource, on the Improvement Network website, aims to show how local authorities and their local strategic partners can embrace sustainability to improve performance and outcomes in their work.

<http://www.improvementnetwork.gov.uk/imp/core/page.do?pageld=1090833>

An online oasis for wildlife

England's newest wildlife reserve - the *Big Wildlife Garden* – is ready for exploration. Launched by Natural England, this innovative web site creates an online network of gardens and open spaces and encourages people of all ages to discover how to attract more wildlife into their gardens.

<http://www.bwg.naturalengland.org.uk>

2009 Survey of Public Attitudes and Behaviours towards the Environment

The 2009 survey gives a representative picture of what people in England think, and how they behave, across a range of issues relevant to the environment including:

- Knowledge of and attitudes towards the environment
- Energy and water use in the home
- Purchasing behaviours
- Recycling, composting and reusing waste
- Food and food waste
- Travel behaviours and attitudes
- Carbon offsetting
- Biodiversity and green space
- Volunteering behaviours
- Wellbeing

Further details on:

<http://www.defra.gov.uk/evidence/statistics/environment/pubatt/index.htm>

CO2 Emissions Results Released

New climate change statistics revealing the carbon footprint of every single part of the UK were published on 17 September. The statistics calculate the climate impact of the energy used by homes, businesses and road transport in each local authority area throughout England, Wales, Northern Ireland and Scotland.

- The UK has already reduced its emissions by 21% on 1990 levels and is committed to a reduction of at least 34% by 2020
- The UK's overall CO2 emissions dropped by 2% between 2005 and 2007
- Emissions have fallen in 335 out of the 434 local authorities in the UK
- The North East had the highest emissions per person at 12.5million tonnes in 2007 but had the largest reduction between 2005 and 2007
- Greater London had the least CO2 emissions per person at 6million tonnes in 2007

Results for Rotherham show that in 2005 per capita emissions were 8.2 tonnes. In 2006, this fell to 6.9 and in 2007 this fell again to 6.6 tonnes.

Further information on these statistics can be found at:

http://decc.gov.uk/en/content/cms/statistics/climate_change/climate_change.aspx

The latest breakdown of information for NI 186 (per capita reduction in CO2 emissions in the LA area can be found at:

<http://www.decc.gov>.

Environmental Audit Committee Report - Greening Government

This Environmental Audit Committee report warns that the Government is not on track to meet targets for cutting its own emissions and could have to pay money to large private sector firms – who may have done more to reduce their emissions – in a new carbon trading scheme due to begin in April 2010. The report also shows that the proportion of renewable energy used by Government departments has dropped in the last year.

The report welcomes improvements in some areas, such as on government road vehicles, where emissions have been cut by 10.3 per cent. But MPs are concerned that the Government is not doing enough to reduce energy use in its buildings – which account for the bulk of emissions – and will therefore fail to meet its target of a 12.5 per cent reduction in carbon dioxide by 2010/11. This could mean taxpayers have to pay for large amounts of carbon allowances under the Carbon Reduction Commitment.

<http://www.publications.parliament.uk/pa/cm200809/cmselect/cmenvaud/503/50302.htm>

Regional

Pioneering climate change in Yorkshire

A £50m project is to be set up in the region, putting Yorkshire at the forefront of research for a low-carbon economy. The first 4 pilot projects will look at climate change, low-carbon supply chains, bio-renewables and carbon-capture technology.

This virtual project, entitled the Centre for Low Carbon Futures, will create a world-class research and training facility. It will combine the expertise of universities in Hull, Leeds, Sheffield and York, and is backed by Yorkshire Forward. The centre has two main aims:

- To create a sustainable regional economy
- To research ways of coping with climate change.

Researchers will provide practical solutions for ways in which organisations in the region can reduce their carbon emissions. The idea is to generate workable solutions for businesses and communities, promoting the uptake of innovations and creating change in the real world.

<http://www.lowcarbonfutures.org/>

Opportunity for influential new role: Chair of the New Yorkshire & Humber Independent Sustainable Development Board

A new independent Sustainable Development Board for Yorkshire and Humber is being established and a Chair for the Board is being sought. The position calls for someone with a drive for embedding sustainable development and ensuring its implementation within regional strategies. With proven skills as a senior level influencer and with a good understanding of the principles of sustainable development, the Chair will help shape this exciting new role and seize the opportunity to drive policy and practice across the region. The post will also add significant value to the Board and will demonstrate the ability to be creative, incisive, objective, challenging and constructive. The chair is for a three year term and will be remunerated on an expenses basis for candidates who can fulfil the role within an existing paid position, or up to £300 per day if that is not possible.

Should you wish to apply, please send your CV, accompanied by a covering letter stating why you are suitable for the role, to debbie.rosen@yorkshire-forward.com. The closing date for applications is 30 October 2009.

Any queries, please contact Debbie Rosen, Principal Sustainable Development Manager, Yorkshire Forward by email as above, or by telephone on 0113 3949783.

Sub-Regional

South Yorkshire Climate Change Leadership Academy

£20,000 RIEP (Regional Improvement and Efficiency Programme) funding has been allocated to South Yorkshire to carry out a number of awareness raising sessions aimed at Councillors and senior managers. The first event will focus on NI 185 (Reducing CO2 emissions from local authority operations) and will take place early December. Speakers will include a representative from DECC, Government Office for Yorkshire & Humber and pupils from a Rotherham school. Invitations will be sent out next week.

Further joint-working is being developed through the South Yorkshire Climate Change Network. Proposed projects include:

- South Yorkshire Climate Change Schools Coordinator
- Building capacity and awareness around climate change in the voluntary and community sector
- Sub-regional Local Climate Impacts Profile (a requirement of NI 188 Adapting to Climate Change)

Local

Draft Environment and Climate Change Strategy

Consultation on the draft document ends today and responses are currently being assessed. Consultation has taken place with a wide range of groups including Rotherham Partnership, Sustainable Communities Scrutiny Panel, NHS Rotherham, Voluntary Action Rotherham and the Council's Sustainable Development Officers Group. The final document will be taken to Corporate Management Team, Cabinet and Rotherham Partnership

Further details and more policy updates can be accessed at:

<http://www.rotherham.gov.uk/graphics/YourCouncil/Policy+Research+and+Community+Engagement/SDPolicyUpdates.htm>

Contact:

Emma Bridge, Policy Officer, Rotherham Council

Tel 01709 822784

Email emma.bridge@rotherham.gov.uk